

See Important Safety Information inside.

BOTOX[®]
—Cosmetic
onabotulinumtoxinA

Visit BotoxCosmetic.com to learn more.
By prescription only. 1-800-BOTOX-MD

Also from the Allergan family of brands:

Latisse[®]
(bimatoprost ophthalmic solution) 0.03%

 **Juvéderm** XC

 **ALLERGAN**

©2010 Allergan, Inc., Irvine, CA 92612. ® marks owned by Allergan, Inc.

JUVÉDERM® mark owned by Allergan Industrie, SAS.

Dysport is a registered trademark of Ipsen Biopharm Limited Company.

Myobloc is a registered trademark of Solstice Neurosciences, Inc.

Reorder: APC40GT10 105621

BOTOX[®]
—Cosmetic
onabotulinumtoxinA



Images taken at rest.
Individual results may vary.

SEE IMPORTANT SAFETY INFORMATION ON PAGE 2.

JOIN THE MILLIONS OF WOMEN WHO SHARE ONE SPECIAL THING.

The real, noticeable results of BOTOX® Cosmetic

BOTOX® Cosmetic (onabotulinumtoxinA) is a prescription medicine that is injected into muscles to temporarily treat moderate to severe frown lines between the brows of adults 18 to 65 years of age.

Now it's your time to discover why so many women have experienced BOTOX® Cosmetic. With millions of treatments, BOTOX® Cosmetic has been proven year after year. Ask your doctor and find out if it is right for you.

IMPORTANT SAFETY INFORMATION

BOTOX® Cosmetic may cause serious side effects that can be life threatening. Call your doctor or get medical help right away if you have any of these problems any time (hours to weeks) after injection of BOTOX® Cosmetic:

- **Problems swallowing, speaking, or breathing**, due to weakening of associated muscles, can be severe and result in loss of life. You are at the highest risk if these problems are pre-existing before injection. Swallowing problems may last for several months.
- **Spread of toxin effects.** The effect of botulinum toxin may affect areas away from the injection site and cause serious symptoms including: loss of strength and all-over muscle weakness, double vision, blurred vision and drooping eyelids, hoarseness or change or loss of voice (dysphonia), trouble saying words clearly (dysarthria), loss of bladder control, trouble breathing, trouble swallowing.

There has not been a confirmed serious case of spread of toxin effect when BOTOX® Cosmetic has been used at the recommended dose to treat frown lines.

The dose of BOTOX® Cosmetic is not the same as, or comparable to, another botulinum toxin product.

Serious and/or immediate allergic reactions have been reported. These reactions include itchy rash, swelling, and shortness of breath. Tell your doctor or get medical help right away if you experience any such symptoms; further injection of BOTOX® Cosmetic should be discontinued.

Please see additional Important Safety Information on pages 14 & 15.

Tell your doctor about all your muscle or nerve conditions such as amyotrophic lateral sclerosis [ALS or Lou Gehrig's disease], myasthenia gravis or Lambert-Eaton syndrome, as you may be at increased risk of serious side effects including severe dysphagia (difficulty swallowing) and respiratory compromise (difficulty breathing) from typical doses of BOTOX® Cosmetic.

Tell your doctor about all your medical conditions, including if you have: plans to have surgery; had surgery on your face; weakness of forehead muscles, such as trouble raising your eyebrows; drooping eyelids; any other abnormal facial change; are pregnant or plan to become pregnant (it is not known if BOTOX® Cosmetic can harm your unborn baby); are breast-feeding or plan to breast-feed (it is not known if BOTOX® Cosmetic passes into breast milk).

Tell your doctor about all the medicines you take, including prescription and non-prescription medicines, vitamins, and herbal products.

BOTOX® Cosmetic may cause loss of strength or general muscle weakness, or vision problems. **If this happens, do not drive a car, operate machinery, or do other dangerous activities.**

Other side effects of BOTOX® Cosmetic include: dry mouth, discomfort or pain at the injection site, tiredness, headache, neck pain, and eye problems: double vision, blurred vision, decreased eyesight, drooping eyelids, swelling of your eyelids, and dry eyes. For more information, refer to the Medication Guide or talk with your doctor.

You are encouraged to report negative side effects of prescription drugs to the FDA. Visit www.fda.gov/medwatch, or call 1-800-FDA-1088.

Full Product Information, including Medication Guide has been provided to your doctor.

1. Data on file, Allergan, Inc. 2. BOTOX® Cosmetic Prescribing Information, August 2009. 3. The American Society of Plastic Surgeons (ASPS). 2009 Report of the 2008 Statistics: National Clearinghouse of Plastic Surgery Statistics. The American Society of Plastic Surgeons (ASPS) Web site <http://www.plasticsurgery.org/Media/stats/2008-US-cosmetic-reconstructive-plastic-surgery-minimally-invasive-statistics.pdf>. Accessed June 15, 2009.

INDICATION: BOTOX® Cosmetic is a prescription medicine that is injected into muscles and used to improve the look of moderate to severe frown lines between the eyebrows (glabellar lines) in adults younger than 65 years of age for a short period of time (temporary).

IMPORTANT SAFETY INFORMATION

BOTOX® Cosmetic may cause serious side effects that can be life threatening. Call your doctor or get medical help right away if you have any of these problems any time (hours to weeks) after injection of BOTOX® Cosmetic:

- **Problems swallowing, speaking, or breathing,** due to weakening of associated muscles, can be severe and result in loss of life. You are at the highest risk if these problems are pre-existing before injection. Swallowing problems may last for several months.
- **Spread of toxin effects.** The effect of botulinum toxin may affect areas away from the injection site and cause serious symptoms including: loss of strength and all-over muscle weakness, double vision, blurred vision and drooping eyelids, hoarseness or change or loss of voice (dysphonia), trouble saying words clearly (dysarthria), loss of bladder control, trouble breathing, trouble swallowing.

There has not been a confirmed serious case of spread of toxin effect when BOTOX® Cosmetic has been used at the recommended dose to treat frown lines.

The dose of BOTOX® Cosmetic is not the same as, or comparable to, another botulinum toxin product.

Serious and/or immediate allergic reactions have been reported. These reactions include itchy rash, swelling, and shortness of breath. Tell your doctor or get medical help right away if you experience any such symptoms. Further injection of BOTOX® Cosmetic should be discontinued.

Do not take BOTOX® Cosmetic if you: are allergic to any of the ingredients in BOTOX® Cosmetic (see Medication Guide for ingredients); had an allergic reaction to any other botulinum toxin product such as *Myobloc®* or *Dysport®*; have a skin infection at the planned injection site.



Images taken at rest.
Individual results may vary.

There's only one BOTOX® Cosmetic

Learn more at BotoxCosmetic.com

WHAT IS BOTOX[®] COSMETIC AND HOW DOES IT WORK?

BOTOX[®] Cosmetic (onabotulinumtoxinA) is a prescription medicine that is injected into muscles and used to improve the look of moderate to severe frown lines between the eyebrows in adults 18 to 65 years of age for a short period of time (temporary). It works by blocking nerve impulses to the injected muscles. This reduces muscle activity that causes those lines to form between the brows.

WHY SHOULD I CONSIDER BOTOX[®] COSMETIC?

Years of squinting, concentrating, or frowning can cause your skin to furrow and crease. As time passes, your skin becomes less elastic and those moderate to severe frown lines between your brows remain...even when your muscles aren't contracting. The moderate to severe frown lines between your brows that form are often referred to as your 1's and may make you look angry and unapproachable.



IS BOTOX[®] COSMETIC THE ONE FOR MY 1'S?

BOTOX[®] Cosmetic can give you real, noticeable results whether you have one moderate to severe frown line between the brows (1's), or two (11's), or even three (111's). Talk to your doctor today to find out if BOTOX[®] Cosmetic is right for you.

IS THERE ANYONE WHO SHOULD NOT BE TREATED WITH BOTOX[®] COSMETIC?

Do not take BOTOX[®] Cosmetic if you are allergic to any of the ingredients in BOTOX[®] Cosmetic (see Medication Guide for ingredients), had an allergic reaction to any other botulinum toxin product such as Myobloc[®] or Dysport[®], or have a skin infection at the injection site.

See Important Safety Information on pages 14 & 15.



Backed By Nearly 11 Million Treatments¹
Real, Noticeable Results

Once you get it, You really get it.

BOTOX[®] COSMETIC

Images taken at rest.
Individual results may vary.

Learn more at BotoxCosmetic.com

IS TREATMENT WITH BOTOX® COSMETIC PAINFUL?

Discomfort is usually minimal and brief. Prior to injecting, your physician may numb the area with a cold pack or anesthetic cream. The entire procedure takes approximately 10 minutes. Many people are in and out of the physician's office without downtime following BOTOX® Cosmetic (onabotulinumtoxinA) treatment.

IS BOTOX® COSMETIC AFFORDABLE?

According to an American Society of Plastic Surgeons survey, the average cost of BOTOX® Cosmetic is approximately \$400.³ Please ask your physician or HCP for more information as pricing may vary.

WILL A TREATMENT WITH BOTOX® COSMETIC AFFECT MY SKIN COLOR?

Men and women of varying ethnicities and skin types have been successfully treated with BOTOX® Cosmetic. Because it works only on the underlying muscles, there's no concern of it affecting your skin color or texture.

WHAT ARE THE POSSIBLE SIDE EFFECTS OF BOTOX® COSMETIC?

BOTOX® Cosmetic can cause serious side effects. See "What is the most important information I should know about BOTOX® Cosmetic?" in Medication Guide. Other side effects include dry mouth, discomfort or pain at the injection site, tiredness, headache, neck pain, and eye problems such as double vision, blurred vision, decreased eyesight, drooping eyelids, swelling of the eyelids, and dry eyes may occur.

BOTOX® Cosmetic may cause loss of strength or general muscle weakness, or vision problems. If this happens, do not drive a car, operate machinery, or do other dangerous activities.

See Important Safety Information on pages 14 & 15.



Images taken at rest.
Individual results may vary.

Learn more at BotoxCosmetic.com

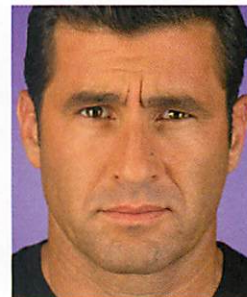


Images taken at rest.
Individual results may vary.

Before



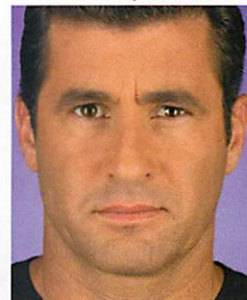
Before



Day 2



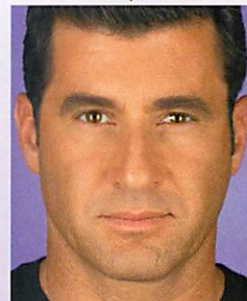
Day 2



Day 14



Day 14



In clinical trials at day 7, 74% of patients demonstrated none or mild glabellar line severity at maximum frown as compared to 6% in placebo; at day 30, 80% of patients demonstrated the same as compared to 3% in placebo.²

See Important Safety Information on pages 14 & 15.

Learn more at BotoxCosmetic.com

BEFORE & AFTER WITH BOTOX[®] COSMETIC (onabotulinumtoxinA)



Photos taken at maximum frown before treatment with BOTOX[®] Cosmetic and taken at maximum frown after treatment with BOTOX[®] Cosmetic at days 2 and 14.

The photos featured here are of actual BOTOX[®] Cosmetic patients. Individual results may vary.

WILL I STILL BE ABLE TO MAKE FACIAL EXPRESSIONS?

Although the results are visible, a treatment with BOTOX[®] Cosmetic (onabotulinumtoxinA) will not radically change your facial appearance or make you look as if you've "had work done." The muscle activity that causes moderate to severe frown lines between the brows is temporarily reduced, so you can still frown or look surprised without the wrinkles and creases between your brows.

HOW QUICKLY WILL I SEE A DIFFERENCE?

Within 24 to 48 hours you may notice a softening in the appearance of your moderate to severe frown lines between your brows. The area may continue to improve for up to a month.

HOW LONG CAN I EXPECT MY RESULTS TO LAST?

Results have been shown to last up to 4 months.² Your own results may vary—be sure to talk to your healthcare provider about what you can expect and when to schedule your next appointment.

IS THERE ANYTHING I NEED TO TELL MY DOCTOR?

Your doctor should be informed of all your medical conditions. If you have a disease that affects your muscles and nerves, such as amyotrophic lateral sclerosis (ALS or Lou Gehrig's disease), or Lambert-Eaton syndrome, you may be at increased risk of serious side effects, including severe dysphagia (difficulty swallowing) and respiratory compromise (difficulty breathing) from typical doses of BOTOX[®] Cosmetic.

Also tell your doctor about all your medical conditions, including if you have had, or plan to have, surgery on your face or otherwise, weakness of forehead muscles, such as trouble raising your eyebrows, drooping eyelids, or any other abnormal facial change. Inform your doctor if you are pregnant or about to become pregnant (it is not known if BOTOX[®] Cosmetic can harm your unborn baby), or if you are breast-feeding. (It is not known if BOTOX[®] Cosmetic passes into breast milk.) Finally, tell your doctor about any and all prescription and non-prescription medicines, vitamins, and herbal products you may be taking.

See Important Safety Information on pages 14 & 15.

Go to BotoxCosmetic.com now

- **SIGN UP** for the *Brilliant Distinctions*® Program where you'll get exclusive invitations, special offers and great savings on treatments.
- **WATCH** personal stories from actual patients.
- **VISIT** the Before and After Gallery.

See Important Safety Information on pages 14 & 15.

Brilliant

DISTINCTIONS®

PROGRAM



Images taken at rest.
Individual results may vary.
By prescription only. 1-800-BOTOX-MD

There's only one BOTOX® Cosmetic

Learn more at BotoxCosmetic.com