

# BUILD - UP

A build-up is the addition of a restorative material to a broken down or decayed tooth before a crown, bridge, inlay, onlay or veneer is placed.

## Frequently Asked Questions

### 1. *What material is in a Build-up?*

A build-up is made of:

- A Tooth Colored "composite" filling material
- A silver "amalgam" filling material

### 2. *What are the benefits of a Build-up?*

A build-up restores a broken down or decayed tooth to the ideal shape needed to accommodate a crown, bridge, inlay, onlay or veneer

### 3. *What are the risks of a Build-up?*

- Preparing for and placing a build-up can irritate the tooth and cause "post-operative" sensitivity which may last for up to 3 months
- Teeth which have had build-ups may need root canal treatment about 6% of the time during the lifetime of the tooth

### 4. *What are the alternatives to having a Build-up?*

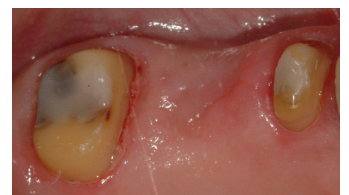
No treatment alternatives exist besides a build-up for broken down or decayed teeth which require a crown, bridge, inlay, onlay or veneer.

### 5. *How can an existing bite affect a Build-up?*

- Excessive biting forces or untreated bite problems may lead to the build-up breaking or loosening.
- Excessive biting forces or untreated bite problems may lead to the tooth, in which the build-up has been placed, breaking.

### 6. *Are there post-treatment restrictions once I have a Build-up?*

A build-up may break or loosen if chewing very hard or sticky foods.



Examples of build-ups