

POST AND CORE

A post and core is a restoration that is cemented into the root canal chamber of a tooth and builds up the top of the tooth in order to hold a crown in place. It is cemented into place and cannot be removed.

Frequently Asked Questions

1. *What material is in a Post and Core?*

Posts are made of three types of materials:

1. Metal
2. Porcelain
3. A fibrous resin material

Cores are made of two types of materials:

1. A Tooth Colored "composite" filling material
2. A silver "amalgam" filling material

Alternatively, the post and core can be made of one solid piece of:

1. Porcelain
2. Gold alloy

2. *What are the benefits of a Post and Core?*

A post and core holds a restoration on to a tooth which has too little remaining structure to retain the restoration itself.

3. *What are the risks of a Post and Core?*

Having a post and core involves some inherent risks both to the remaining tooth structure and to the post and core itself:

- The root of the tooth may be perforated when placing the post, necessitating the extraction of the tooth
- Under stress, the post may torque the root of the tooth and cause it to fracture, necessitating the extraction of the tooth
- Under stress, the cement holding the post and core on to the tooth can fail causing the post and core to leak, loosen or fall out

4. *What are the alternatives to having a Post and Core?*

The alternative to having a post and core is to have the tooth extracted and replaced with:

- A dental implant
- A bridge
- A partial denture

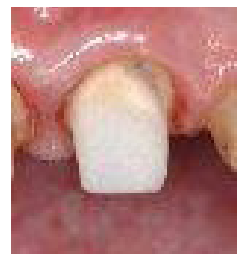
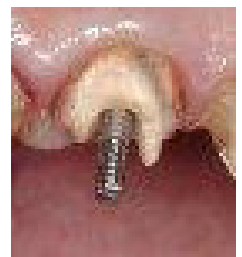
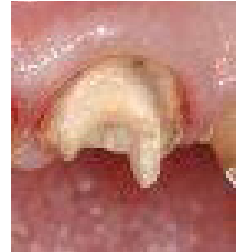
5. *How can an existing bite affect a Post and Core?*

Excessive biting forces or untreated bite problems may lead to:

- The post and core breaking, loosening or leaking
- The tooth in which the post and core has been placed breaking

6. *Are there any post-treatment restrictions once I have a Post and Core?*

A post and core may break, loosen or cause the tooth to break if chewing very hard or sticky foods.



Broken down tooth built up with a metal post and composite core



Broken down tooth built up with a metal post and amalgam core