



GI
ASSOCIATES

2018

ANNIVERSARY
CELEBRATION **25**

**GI Associates
Welcomes Two New
Gastroenterologists**
Fall 2018



DR. JUSTIN HARTKE

Specialties
Gastroenterology
Hepatology

Board Certifications
Gastroenterology
Internal Medicine

Fellowship
Indiana University

Residency
University of Virginia



DR. ADAM GODSEY

Specialties
Gastroenterology
Hepatology

Board Certifications
Gastroenterology
Internal Medicine

Fellowship
Virginia Commonwealth
University

Residency
University of Virginia

NOW ACCEPTING PATIENTS!
(715)847-2558

**GI
ASSOCIATES
ENDOSCOPY CENTER**

FOR TEN YEARS the GI Associates Endoscopy Center has offered patients and their families a high-quality, cost efficient endoscopic experience, provided by compassionate staff in a comfortable environment.



✔ **Patient Experience.** Greater than 96% of patients would recommend our facility and express confidence in their care. In response to favorable patient feedback, our anesthesia program now offers enhanced access to anesthesia care supported by a team of certified nurse anesthetists and sedation-trained RNs.

✔ Our commitment to service and care excellence is demonstrated through accreditation by **AAAHC and Medicare certification.**

✔ GI Associates Endoscopy Center was the first endoscopy center in Wisconsin to receive **Unit Recognition by the American Society for Gastrointestinal Endoscopy (ASGE)** as part of its program dedicated to promoting quality and safety in endoscopy.



ENDOSCOPIC ULTRASOUND

Endoscopic Ultrasound (EUS) is used to evaluate lesions or masses detected via endoscopy or other x-ray or CT scan testing. EUS assists with diagnosis of diseases in the pancreas, bile duct and gallbladder and helps to determine the nature of masses and the extent of spread of certain digestive tract cancers.

▶ *Dr. Eric Johnson offers his knowledge and advanced training to provide patients this progressive diagnostic testing option.*

SAFETY & QUALITY CARE

The safety of our patients is our highest priority. With any medical procedure, there is a risk of complication. Endoscopic procedure complications include perforation, procedure related GI tract infection and post-polypectomy bleed. Our complication rates remain far below national GI benchmarks.

✔ **Complete Examination.** Our experienced endoscopists provide a complete examination of the colon, reaching the end of the colon (cecum) more than 99% of the time, outperforming the ASGE national benchmark of 90%.



RESOLUTION OF
C.DIFF INFECTIONS

92.3%

OF THE TIME



FECAL MICROBIOTA TRANSPLANT (FMT)

GI Associates Endoscopy Center provides FMT for patients with recurrent Clostridium difficile infections (C.diff) not responding to standard antibiotic therapies. C.diff is an aggressive gut bacterium that infects about half a million Americans every year, and kills nearly 30,000.



500,000

Americans are affected by C. difficile each year.

30 THOUSAND patients die from C. difficile every year.

Through partnership with OpenBiome, three FMT delivery options are available. 92.3% of patients experienced resolution of their C.diff infections when treated via the colonoscopy delivery route.

COLORECTAL CANCER DETECTION*

*Combined data 2009-2018

173
NEW CASES OF
**COLORECTAL
CANCER (CRC)
DIAGNOSED**

15%

were average risk screening patients...

...of these

46%

were age 55 or younger

CRC RISK FACTORS

Family history of CRC or colon polyps

Known family history of inherited CRC syndromes

Personal history of CRC

Personal history of chronic inflammatory bowel disease

ADENOMA DETECTION

RATES OF AVERAGE RISK SCREENING PATIENTS*

*Combined data 2009-2018



**1 OF 2
MEN**

46% age 50+

vs. National Benchmark of 30%

**1 OF 3
WOMEN**

32% age 50+

vs. National Benchmark of 20%

For over Twenty-Five Years GI Associates has been committed to improving the health and quality of life for patients by providing advanced digestive health services.



✔ **More Providers.** Our provider team has grown from 2 adult gastroenterologists to a diverse provider team of 9 adult and 1 pediatric gastroenterologists, 2 nurse practitioners and 3 physician assistants.



✔ **Additional Locations.** Locations expanded to include Wausau, Antigo, Stevens Point, Rhinelander, Woodruff and Eagle River.

✔ **Comprehensive Diagnostic and Ancillary Services.** Offered in a convenient office setting with weekday scheduling options.

- Infusion Services
- Capsule Endoscopy
- Breath Hydrogen
- Esophageal Motility

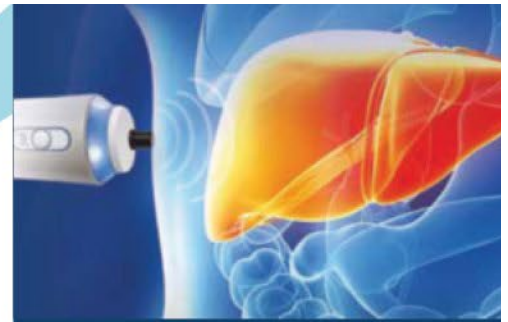


PLUS! Advanced Reflux Diagnostic Services
· pH Impedance · pH Probe
· Laryngopharyngeal airway pH

✔ **Hemorrhoid treatment.** Offering the CRH O'Regan system for treatment of internal hemorrhoids. Performed in the office, this minimally invasive treatment requires no prep and no sedation and patients return to work the same day.

✔ **The UW Health Liver Transplant team** offers a pre- and post-transplant clinic at our Wausau location each month, patients from throughout the region receive care closer to home.

UW Health
University of Wisconsin
Transplant Program



RECENTLY ADDED! LIVER ELASTOGRAPHY

Liver Elastography (FibroScan), also called transient elastography, is a non-invasive measurement of liver stiffness. Liver Elastography works by emitting a small pulse of energy. The speed of the energy is calculated to give an immediate measure of liver stiffness. Liver stiffness is helpful in the diagnosis and treatment of Nonalcoholic Fatty Liver disease (NASH), Cirrhosis, Hepatitis C and more. It offers a low cost, less invasive alternative to liver biopsy.

GET IN TOUCH

Convenient Locations in Wausau, Antigo, Stevens Point, Rhinelander, Woodruff & Eagle River

MAIN OFFICE ADDRESS

GastroIntestinal Associates, S.C.
411 Westwood Drive
Wausau, WI 54401

PHONE

(715) 847-2558

ONLINE

www.giassoc.org

