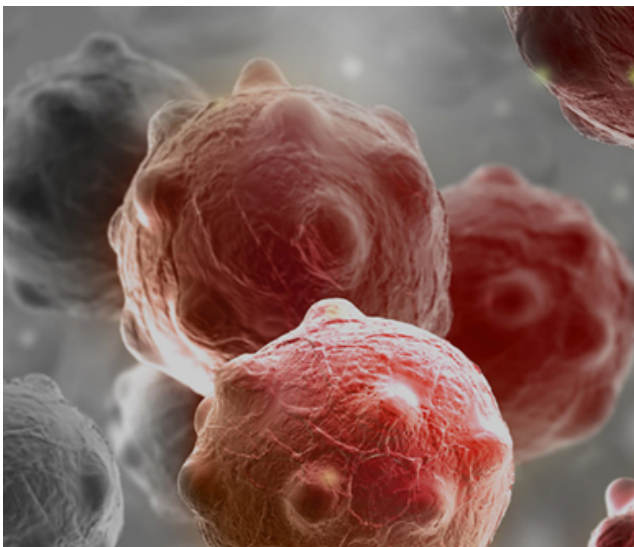


## SIGNAL-C™

The SIGNAL-C™ test is being developed to detect colorectal cancer (CRC) and advanced precancerous lesions (APL) in average risk screening populations aged 45 and over. We aim to make a CRC detection and prevention test method that is safer, highly accurate, and less invasive.



## JOIN US IN OUR FIGHT TO CURE CANCER

For more information, please contact your clinician

# PROMISE

## CLINICAL RESEARCH STUDY

### YOU MAY QUALIFY IF:

- You are between 45 and 84
- Intended to undergo a standard-of-care screening colonoscopy.
- Willing to consent a blood draw sample
- Up to one year follow up procedure

### AND YOU HAVEN'T:

- Undergone colonoscopy within preceding 9 years
- Positive FIT / FOBT within prior 12 months
- Cologuard or Epi proColon within the prior three years
- Had Personal or Family history of colorectal cancer



935 K  
DEATHS

1.9 M  
NEWCASES



More than 1.9 million new colorectal cancer cases and 935,000 deaths were estimated in 2020. CRC is the 3rd most commonly diagnosed malignancy and 2nd leading cause of cancer deaths for men and women in the U.S. By 2030, its burden is expected to increase by 60% to more than 2.2 million new cases and 1.1 million deaths.

To address the increase in early-onset colorectal cancer cases, both the American Cancer Society and U.S. Preventive Services Task Force have lowered the recommended age for screening individuals at average risk of CRC, from 50 to 45.

Universal  
DIAGNOSTICS



<http://www.universaldx.com>

Version 1.0

June 2023