

## Frequently Asked Questions

### 1 Is PROPEL clinically proven?

PROPEL's safety and efficacy is backed by the highest level of clinical evidence. Over 100,000 people have been treated with PROPEL.

### 2 Will I feel PROPEL in my sinus?

PROPEL is lightweight and usually cannot be felt once in place.

### 3 What should I do after the procedure?

Always follow your doctor's instructions. Frequent saline irrigations are important for post-surgical healing.

## Hear What Others Are Saying at [MySinusitis.com/stories](http://MySinusitis.com/stories)



"I could breathe. There was no stuffiness. The recovery was just a few days." - Tammy

"I haven't had a sinus infection since I had the procedure done. I breathe better. I'm able to exercise more."- Michael

Results vary. See back cover for information on benefits and risks.



The PROPEL sinus implant is intended for use following ethmoid sinus surgery to maintain the sinus opening. PROPEL mini is intended for use following ethmoid or frontal sinus surgery to maintain the sinus opening. These products are intended for use in patients  $\geq 18$  years of age. These products are not intended for people who are allergic to the drug mometasone furoate (MF) or to certain polymers. Safety and effectiveness of the implants in pregnant or nursing females has not been studied. Risks may include pain/pressure, movement of the implant (within or out of the sinus) and possible side effects of the drug. The most common side effects in clinical studies were infection, headache and nose bleed. For more information on the risks and benefits of PROPEL and PROPEL mini, please talk to your doctor. The FDA approved labeling can be found at [www.PROPELOPENS.com](http://www.PROPELOPENS.com). Rx only.

©2016 Intersect ENT, Inc. INTERSECT and PROPEL are trademarks and registered trademarks of Intersect ENT, Inc.

MPM 00285 Rev.A

# Chronic Sinusitis Relief that Lasts

THERE'S HOPE. 



PROPEL®

MOMETASONE FUROATE SINUS STENT

## Don't Just Treat the Symptoms. Treat the Source.

Sinus surgery with PROPEL is clinically proven to provide relief by targeting **inflammation**, the primary characteristic of chronic sinusitis.

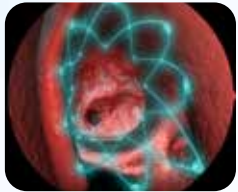


PROPEL sinus stent



### 1 OPENS

After sinus surgery, PROPEL is placed to help prop open the sinus.



### 2 DELIVERS

PROPEL delivers medicine directly to the sinus to reduce inflammation that could block the opening.



### 3 DISSOLVES

As the sinus heals open, PROPEL is designed to dissolve within 45 days.

## Sinus Surgery Has Advanced

If you and your physician have discussed sinus surgery, be assured that it is easier and less invasive than ever before.



Small instruments are introduced through the nostrils to open sinuses blocked by inflammation.



Uncomfortable gauze packing is a thing of the past.



PROPEL is placed in the sinus after surgery to promote healing and reduce the need for additional procedures.

*Ask your doctor if sinus surgery with the PROPEL sinus stent is right for you.*

To learn more about sinusitis, treatment options, and PROPEL, visit [MySinusitis.com](https://www.MySinusitis.com)

# PROPEL®

